The background of the top section is a dark blue gradient with a glowing green and white network globe. The globe is composed of numerous lines and nodes, with binary code (0s and 1s) appearing to flow outwards from the center, creating a sense of dynamic connectivity and data flow.

Flexible Connectivity
Optimized Bandwidth

Pacnet Global Ethernet International Private Line CAPACITY

Business applications are constantly evolving to answer your organization's need to connect, to expand, and to be more profitable. Tried and tested enterprise tools such as CRM and ERP are adding new capabilities while new collaboration tools utilizing high definition video and convergent communication are becoming more mainstream. As these applications evolve, so do your bandwidth demands.

Faced with the challenge of delivering bandwidth-hungry applications more efficiently across Metro and Wide Area Networks, carriers and enterprises alike are forced to leverage private line connections developed for the voice network as transport mechanism for their Ethernet LAN traffic. As these two types of traffic do not map well together, customers may end up wasting capacity, experience throttling of LAN traffic and wrestle with the complexity of using various network technologies for their applications.

Pacnet spares you from the cost, quality and management issues resulting from the use of multiple private line connections with Pacnet Global Ethernet International Private Line (EIPL), which provides point-to-point and point-to-multipoint Ethernet virtual connectivity between paired and multiple dedicated user network interfaces.

Built on high quality subsea network with SDH (Synchronous Data Hierarchy) technology, Pacnet Global EIPL delivers dedicated and protected bandwidth with high degree of network transparency so you can realize seamless, flexible and cost efficient connectivity to selected key cities in Asia, US and Europe. With Pacnet Global EIPL, carriers increase ARPU with reduced bandwidth cost while businesses save on local loop costs through optimized bandwidth use.

Flexible Connectivity Optimized Bandwidth

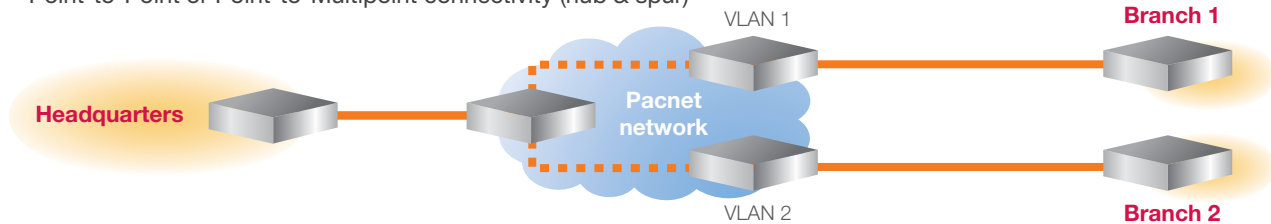
TECHNICAL DESCRIPTION

Pacnet Global EIPL rides on Pacnet's SDH infrastructure which offers dedicated bandwidth and high degree of network transparency so customers can leverage high quality and full control of Ethernet WAN (Wide Area Network) connection.

- For business requiring dedicated bandwidth over multiple T1/E1s or DS3



- Point-to-Point or Point-to-Multipoint connectivity (hub & spur)



Standard Offer			
Component/Plan	Ethernet	Fast Ethernet	Gigabit Ethernet
Ethernet Port*	10M	100M	1G
Ethernet Bandwidth	2M, 4M, 6M, 8M, 10M	2M, 4M, 6M, 8M, 10M, 20M, 30M, 40M, 50M, 60M, 70M, 80M, 90M, 100M	150M, 300M, 450M, 600M, 750M, 900M, 1G

Services Option			
Component/Plan	Ethernet	Fast Ethernet	Gigabit Ethernet
Last Mile • Ethernet NTU	Available (subject to Certification) • Required		Available • Not Required
Intra-building Connection • Within 100M • Over 100M	Available • Copper Wiring • Single-mode Fiber with Ethernet Extenders		Available • Multi-mode Fiber

* Default frame size (PoP-to-PoP): 1536 bytes including header

Options

Point-to-Multipoint Service

It is a cost-effective solution that spares customers from costs associated with linking more than two destinations as well as their ongoing maintenance.

SmartTransport Service

It provides 3 protected and 1 unprotected options to ensure service performance and network resilience.

Availability

Australia, China, Europe, Hong Kong, Japan, Indonesia, Korea, Malaysia, New Zealand, Philippines, Singapore, Taiwan, Thailand and United States.