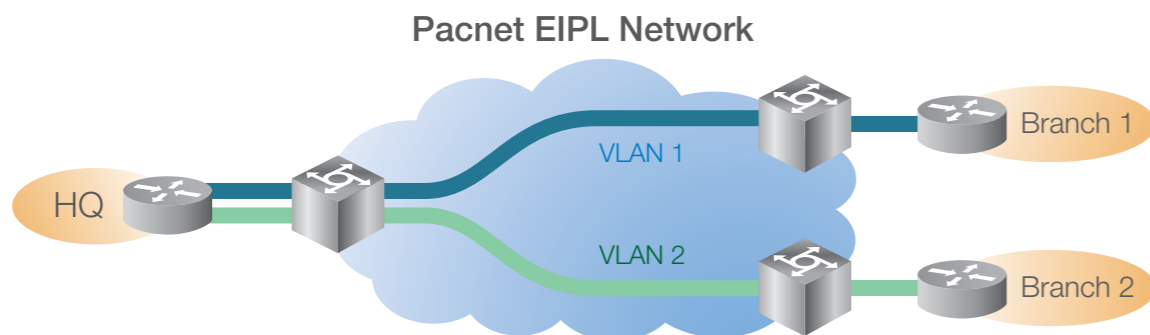


No-compromise Power
Cost Efficiency

What is Pacnet EIPL Point-to-Multipoint

Pacnet Global Ethernet International Private Line Point-to-Multipoint Service is an enhancement of its fast growing and highly in-demand EIPL service. A cost-effective option to Point-to-Point IPL, Pacnet EIPL Point-to-Multipoint service spares customers from the cost of linking more than two destinations which typically terminate into one destination, usually the customer's headquarters. Pacnet EIPL Point-to-Multipoint is designed to groom all the point-to-point traffic into the hub port as illustrated below:



Pacnet EIPL Point-to-Multipoint is designed for enterprises that demand a more cost effective way to connect their overseas branch offices to their headquarters, as well as carriers and service providers who want to connect their customers within a single physical access to Pacnet's network.

With Pacnet EIPL Point-to-Multipoint, you can save on multiple Leased Lines and equipment costs, giving you a more simplified, easier to manage network.

Cut back on your Leased Line connections. Call Pacnet NOW!

For more details about Pacnet EIPL Point-to-Multipoint service, please visit our website at www.pacnet.com

No-compromise Power
Cost Efficiency

Pacnet Global EIPL Point-to-Multipoint Service CAPACITY

The biggest challenge of multi-site enterprises is how to get all its branches connected and be able to support collaboration among geographically-dispersed teams without putting a dent on their IT budgets.

There is always the option to deploy secure and reliable point-to-point connectivity using International Private Line (IPL), which can be costly depending on the number of sites you wish to connect. Granting you have the budget to support multiple IPL circuits across your LANs, you certainly don't want to be saddled by the complexity of managing many different point-to-point connections. You would rather spend your money growing your business.

The ability to cost-effectively connect multiple sites within a corporate network without compromising efficiency and security, is one of the reasons why International Ethernet services are gaining grounds among Asian enterprises - from multinationals to SMBs with national or overseas branches.

With Pacnet Global Ethernet International Private Line (EIPL) Service, customers can build a robust communication infrastructure using a cost-effective service that delivers flexible and scalable bandwidth, helping you enhance privacy and giving you more control over you network.

Why International Ethernet is Gaining Traction

According to research company Frost and Sullivan, International Ethernet is expected to be the biggest gainer in the Asia Pacific WAN Services market, forecasted to grow at a compound annual growth rate (CAGR) of 47.9% from 2008 to 2014 due to its affordability and flexibility. Driving this trend are home grown companies undergoing global expansion and multinational companies demanding site-to-site and data center connectivity across multiple regions.

International Ethernet service provides a win-win option for both enterprise and carrier customers. Offering lower price per bit compared with multiple SDH/Sonet IPL circuits, it provides huge cost benefits for enterprises switching from Multiple T1s, E1s, DS3, OC-n or STM-X.

DO YOU NEED ETHERNET INTERNATIONAL PRIVATE LINE?

How do you determine if Pacnet EIPL is good for you? To give you an idea on how EIPL could benefit you, we profiled two types of customers and determine how EIPL could help them cost effectively achieve their network expansion goals:

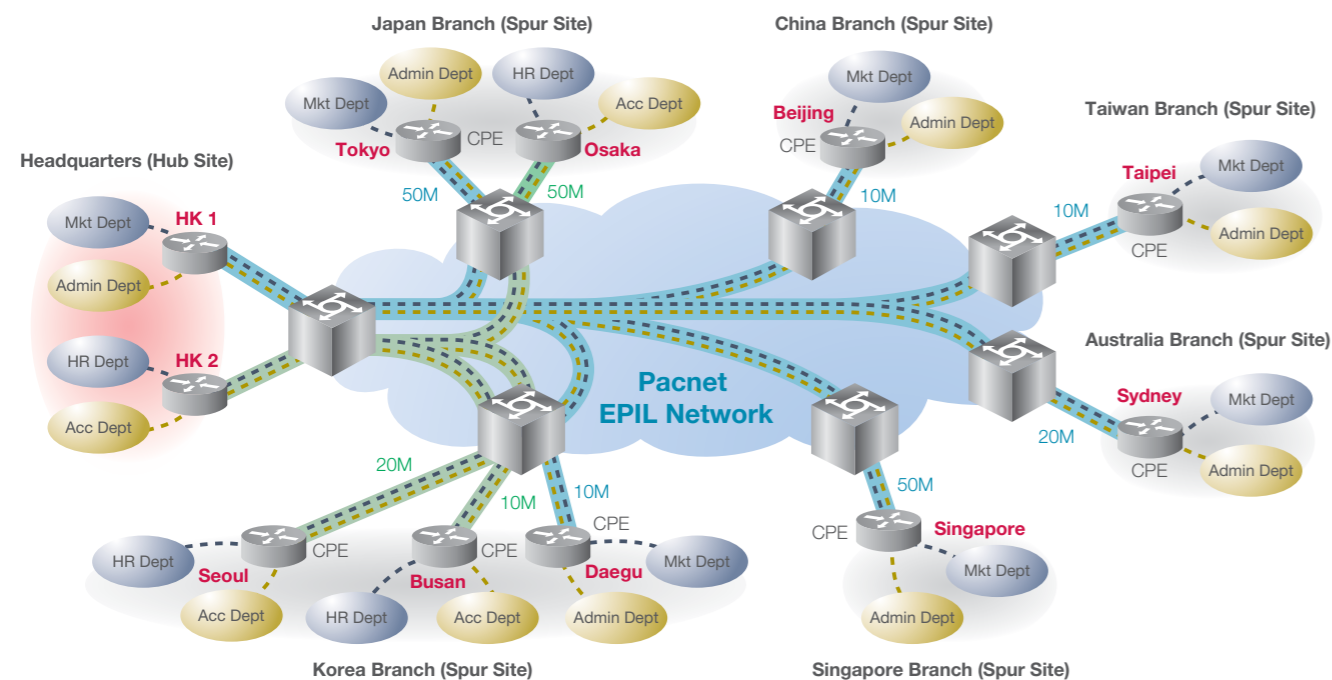
An enterprise customer may be compelled to pay for a DS-3 connection to have access to 10M of bandwidth because of lower equipment cost and better bandwidth utilization. But for a carrier, the bandwidth cost required to provide 10M circuits is actually lower than using DS-3 over the same route. Furthermore, International Ethernet services could generate new data revenues and profits from growing enterprise data traffic. This new service can complement existing Frame Relay, ATM and Private Line service and encourage customers to switch to these services.

Customer A (Multi-site Enterprise)

An European-based Options Exchange company started off as a single floor trader but has quickly grown to become a leading independent global arbitrage in Europe and Asia with plans to branch out in the US. The company specializes in screen trading, employs more than 500 staff globally, and maintains offices in Amsterdam, Sydney, Chicago, Tokyo and Taipei.

Challenge	Points to connect	What can Pacnet EIPL Point-to-Multipoint Do?
Build a corporate network that can enhance the security, productivity and profitability of its traders.	<ul style="list-style-type: none"> Hong Kong (2 Hub Sites) China (1 Spur Site) Japan (2 Spur Sites) Korea (3 Spur Sites) Taiwan (1 Spur Site) Singapore (1 Spur Site) Sydney (1 Spur Site) 	<ul style="list-style-type: none"> Cut down local access costs for Headquarters in HK by 60% Simplifies the network management Supports customer to build their own VLAN which provides several connections for different departments. Services can be extended to China

Network Diagram



Depending on your needs there are three International Ethernet connections you can leverage:

- Point-to-Point – Provides dedicated Ethernet service between two sites (e.g. your headquarters and a branch)
- Point-to-Multipoint – Allows you to connect a site with various sites using Ethernet virtual circuits
- Any-to-Any – Allows you to connect multiple branches (e.g. Virtual Private Leased Line)

Customer B (Carrier)

A leading provider of voice services, Internet and Value-Added Services in India, this company serves over 1400 enterprises, 200 carriers, and 2 million retail customers in 163 countries across 6 continents. It owns one of the world's largest private undersea cable system connecting 40 key business markets in India, the Middle East, Asia, Europe, and the U.S. The company recently acquired a managed services company with presence in 230 countries.

Challenge	Points to connect	What can Pacnet EIPL Point-to-Multipoint Deliver?
To build a protocol transparent and cost effective backbone network in the region	<ul style="list-style-type: none"> Singapore (1 Hub Site) Hong Kong (1 Spur Site) Los Angeles (1 Spur Site) Sydney (1 Spur Site) Auckland (1 Spur Site) 	<ul style="list-style-type: none"> Robust backbone network in Asia Supports Jumbo frames and VLAN Allows customer to upgrade their bandwidth whenever demand arise

Network Diagram

